

# TIBCO iProcess Conductor

Business processes are becoming more complex, often involving unpredictable variables that can require major changes during execution, even changing the entire course of the process. With this increased complexity, there is an even greater need to closely monitor processes to ensure that they are executing properly and to identify and resolve problems before they affect customers. However, additional resources are not being provided to effect this change, forcing organizations to look for ways to get the most from their existing business processes.

TIBCO iProcess™ Conductor software supports complex business process management (BPM) by abstracting timing and resource requirements into a dependency mapping layer that maximizes reusability of process components and flexibility and control of business processes. TIBCO iProcess Conductor coordinates business processes that are executed in TIBCO iProcess Engine. It enables business users to select templates or create processes – including resource requirements and timing dependencies – immediately prior to run-time from re-usable process components.

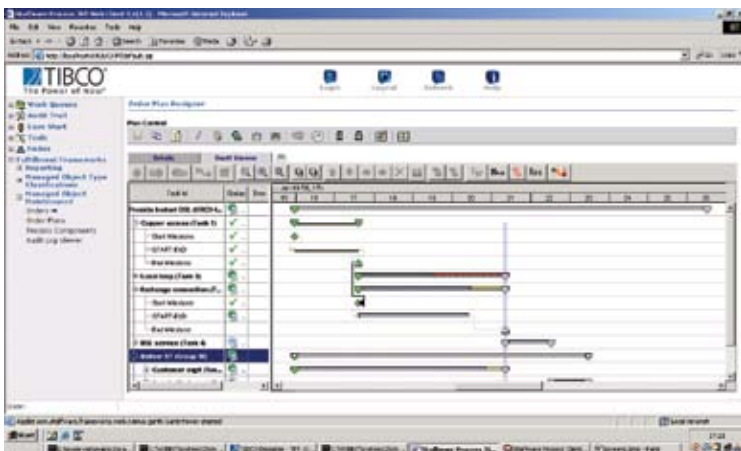
TIBCO iProcess Conductor fosters a goal-oriented approach to BPM because processes are designed in terms of goals, with each step toward the goal achieved by process components. Processes are monitored at the sub-goal level, but within the context of the larger goal. If a sub-goal is not met in a timely manner and jeopardizes the overall goal, users are notified and can ameliorate the problem. Processes can be modified during execution. If a new goal is identified, a process can be rolled back to the last process component in common between the old and new goal.

## AT A GLANCE

**TIBCO iProcess Conductor** packages TIBCO iProcess Engine processes as *independent process components that are combined to create an execution plan*. Process components can be reused, coordinated, individually monitored, dynamically modified — even completely remodeled — during runtime to enable goal-oriented BPM.

## BENEFITS

- Fine-grained, goal-oriented monitoring of processes ensures the best possible process outcome. Missed sub-goals trigger alerts, but are considered in the context of the entire process. If predictions suggest that the completion of the goal is jeopardized, action can be taken ahead of time to avoid or mitigate the problem.
- Low levels of inter-process dependencies between process components (compared to other flexibility tactics such as dynamic sub-procedures) engenders a higher degree of reusability. This results in greater return on the BPM investment.
- Reusable process components make it easy to create processes with any number of product and service combinations and facilitates easy run-time process modifications, whether to handle a potential jeopardy condition or modify a customer order.



The iProcess Conductor execution plan provides a Web-based design and monitoring environment.

## ATTRIBUTES & CAPABILITIES

### Execution Plan Creation

Execution plans are end-to-end business processes created out of re-usable process components. With the sub-goals and deadlines set, the management of these processes is similar to executing a project plan. Execution plans may be generated in two ways.

- For processes occurring with relative frequency, templates can be created and selected based on rules.
- Immediately prior to run-time, an ad-hoc execution plan can be created by a business user using a library of process components.

### Flexible Process Design

A separate dependency mapping layer is the key to easy creation of complex, flexible processes.

- Because process component dependencies are abstracted, the components may be concatenated in any order, with all dependencies specified during design.
- Design can be done either during the creation of a template or manually, immediately prior to execution.
- Temporal dependencies can be set, for example: start simultaneously with, do not start until x time, do not start until y has finished, wait z hours before starting.

### Jeopardy Management

During the creation of an order plan, a variety of thresholds can be established indicating whether a step or sub-goal is in jeopardy of being completed on time.

- Critical path analysis is performed to determine whether sub-goals are in jeopardy. This analysis is based on the previously determined dependencies.
- If an entire process is shown to be jeopardized, action can be taken to avoid or mitigate the current or predicted jeopardy condition.

### Dynamic Interaction with Business Processes

Users can see the progress of business processes and make changes to running processes when new goals are identified. This is economical and supports goal-oriented BPM.

- Easy to understand user interface depicts real-time process status, including actual time of completed sub-goals or components, where processes may be in jeopardy, etc.
- When a goal changes mid-stream, the user can identify which of the already completed steps are also required for the new goal, and start from the point where the two goals diverge, rather than starting over completely.

### PLATFORM, STANDARDS AND SECURITY

- Operating System:  
Sun SPARC  
Solaris 7 (SunOS 5.7) or  
Solaris 8 (SunOS 5.8)
- Database: Oracle  
Release 9.2.0.4
- J2EE Application Server:  
BEA WebLogic Version 8.1  
Service Pack 4
- Java Runtime Environment:  
The client machine must be running Version 1.4.2\_08 of the J2SE Java Runtime Environment (JRE)

**TIBCO Software Inc.** (NASDAQ: TIBX) is the leading independent business integration software company and a leading enabler of real-time business, helping companies become more cost-effective, more agile and more efficient. TIBCO has delivered the value of real-time business, what TIBCO calls The Power of Now®, to thousands of customers around the world and in a wide variety of industries.

©2006, TIBCO Software Inc. All rights reserved. TIBCO, the TIBCO logo, The Power of Now, TIBCO Software, TIBCO BusinessWorks and TIBCO iProcess are trademarks or registered trademarks of TIBCO Software Inc. in the United States and/or other countries. All other product and company names and marks mentioned in this document are the property of their respective owners and are mentioned for identification purposes only. 02/06



[www.tibco.com](http://www.tibco.com)

Global Headquarters  
3303 Hillview Avenue  
Palo Alto, CA 94304

**Tel:** +1 650-846-1000  
+1 800-420-8450

**Fax:** +1 650-846-1005